

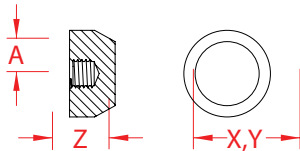
STOP NUT, UNF THREAD 316 STAINLESS STEEL



Import



Precision
Machined



| ITEM | A (size) | X (height) | Y (length) | Z (width) | WT (lb) | PACKAGING TYPE | EACH (qty) | INNER (qty) | CARTON (qty) | UPC |
|--------------|-------------|---------------|---------------|--------------|------------|-------------------|---------------|----------------|-----------------|--------------|
| S0724-UF07-R | 1/4" | 0.75" | 0.75" | 0.40" | 0.03 | POLYBAG | 1 | 100 | 1,000 | 791506048923 |

NOTE:

DESIGNED FOR USE WITH HAND SWAGE AND STANDARD STUDS. STOP NUT IS PERFECT FOR CABLE RAILING SYSTEMS WHERE "THROUGH POST" HARDWARE IS DESIRED FOR MINIMAL OBSTRUCTION.

USE AT THE END OF SWAGE STUDS FOR A FINISHED LOOK.

ALL DIMENSIONS ARE NOMINAL (+/- 3%) AND ARE SUBJECT TO CHANGE WITHOUT NOTICE.